



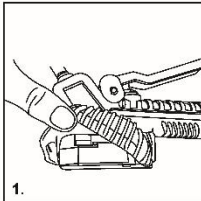
Operating Instruction



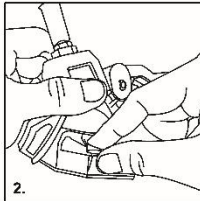
- Easy to Read LCD Display
- According to 86/217/EEC
- Four Units Choice (PSI, BAR, KPA, KGF)
- Prolongs Tire Life

Manufacturer reserves the right to change product features at any time.

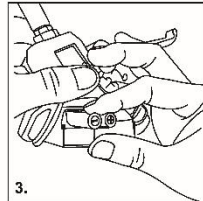
BATTERY INSTALLATION INSTRUCTION



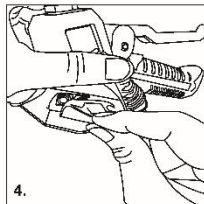
Peel back rubber sleeve



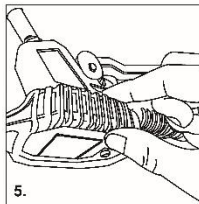
Pry the cover open
then pull cover out
(care to hold down cover)



Install 2 AAA batteries
in indicated orientation



Place the battery cover
along the slot, snap
battery cover shut



Reinstall rubber sleeve



1. Remove tire valve cap.
2. With clip-on air chuck lever depressed, firmly press chuck onto tire valve stem and release lever, ensure that no air leaks.
3. **On:** Tire inflator will turn on automatically and displays the tire pressure. Press the button 3 seconds to turn on the inflator, if no work, the inflator will be turned off automatically 90 seconds later.
4. **Light:** When the inflator is on, press the button to turn on the backlight, so to read the pressure easily in darkness, the backlight will extinguish automatically in 5 seconds.
5. **Unit:** Press button above 3 seconds, enter unit change mode, then press button shortly to choose the desired unit. The unit chosen will be default unit for following usage.
6. The inflator's battery is 2*AAA, if the voltage is below 2.4V, the low battery signal on the top left will be flashing continuously, to remind user to change the battery.

BATTERY CHANGE: remove rubber cover and find the battery cover on the upper right side. Remove the cover and change the batteries.

7. Measuring Range: 0.5-12Bar (7-174Psi). Reading Accuracy is 0.01Bar (0.1Psi). When air pressure is above 17Bar (250Psi), LCD displays '----'.



This Tire Inflator has been tested in normal working environment according to EU standard 86/217/EEC

Allowable tolerance

+/-0.08 bar up to and including 4 bar

+/-0.16 bar between 4 bar and 10 bar inclusive

+/-0.25 bar greater than 10 bar

**Important: To avoid the risk of personal injury, esp. to the eyes, face or skin,
DO NOT direct the stream at any person.**

